

QLS SERIES[®]

PREFABRICATED LIFT STATIONS WITH Z-RAIL[®] TECHNOLOGY



Complete lift station packages are factory assembled for quicker, easier installation at the jobsite.

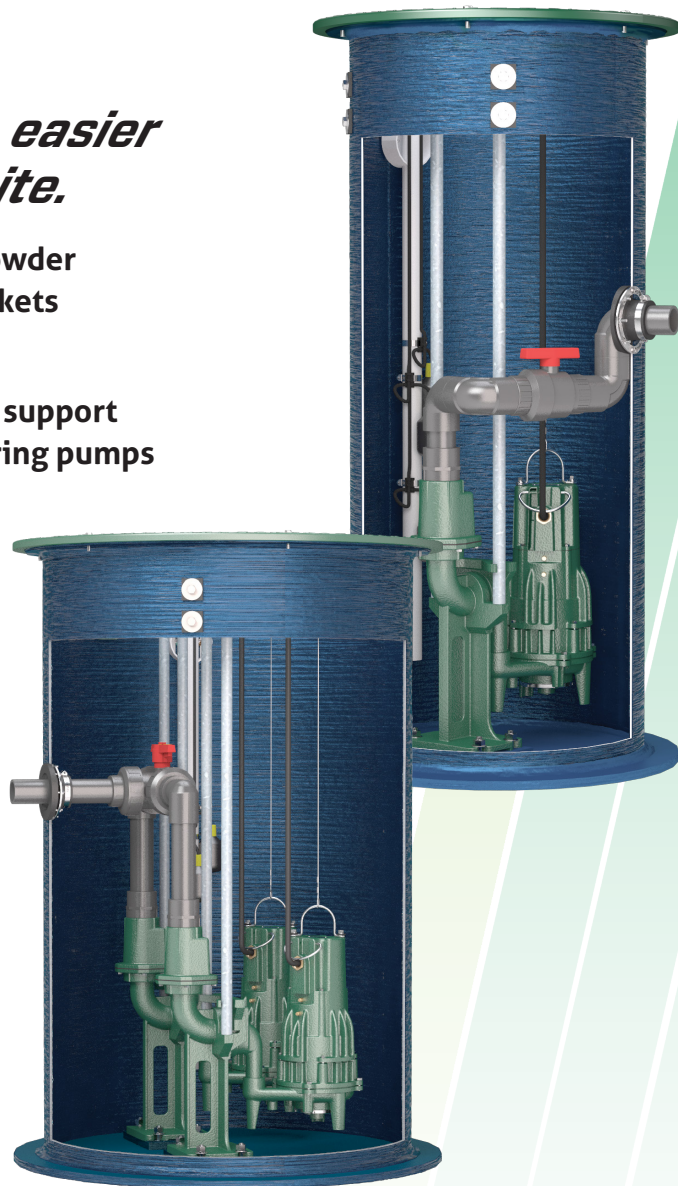
Zoeller's Z-Rail[®] Technology with powder coated, ductile iron elbows and brackets provides longer life and reliability.

Dual guiderail system offers greater support and stability while raising and lowering pumps compared with single rail systems.

A wide variety of basin diameters and depths are stocked to accommodate almost any job.

Cover choices include solid fiberglass and either steel or aluminum hatches.

Built for grinders, effluent, or sewage pumps!



Don't see what you need? Custom systems with Z-Rail[®] Technology are available. Contact our experts at zcotechnical@zoeller.com

QLS SERIES™

Prefabricated Lift Stations With Z-Rail® Technology

SHARK *Grinder Pumps*
Built With The Contractor In Mind

Pumps:

- Zoeller commercial effluent, sewage, and Shark® grinder pumps, 1/2 - 2 HP
- Durable, Class 30, cast iron construction
- Corrosion-resistant, powder coated epoxy finish
- Oil-filled, hermetically-sealed motor with thermal overload protection and integral cooling fins
- Upper and lower bearings provide smooth operation and durability in the harshest environments
- 440C stainless steel cutter and disc hardened to Rockwell C50-60 for long lasting dependability with Zoeller Tri-Slice® cutter technology on grinder pumps
- Non-clogging vortex impellers on centrifugal units for reliability
- Stainless steel lifting handle, screws, and bolts



Grinder models 810, 815



Grinder models 818, 819, 820

Grinder models 840, 841, 842

Models 282 - 295 for sewage



Models 161 - 191 for effluent

Control Panel: Zoeller will make sure the panel you receive is exactly what you need for the pump you have selected.

We have you covered.

Features include:

- Simplex and duplex operation
- NEMA 4X watertight enclosure
- Green pump run pilot light for each pump
- High water alarm (audible horn and visual red beacon)
- Auxiliary dry contact
- Magnetic starter for each pump
 - Alternating feature for duplex systems
 - Numbered terminal strip for connecting pumps and variable level float switches
 - 840 panel comes standard with start components and auto-reversing feature



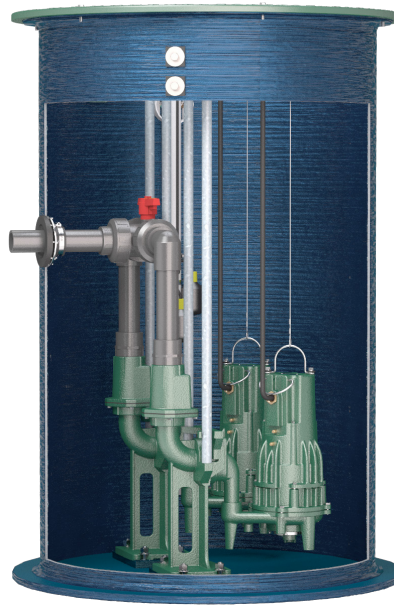
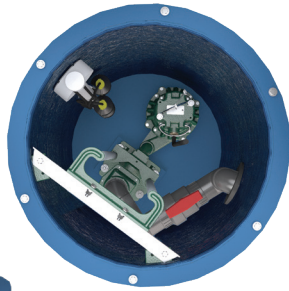
Float Tree: Factory mounted in the basin. The required float switches are pre-set at elevations suitable for most installations and rarely require adjustment. The tree is pre-mounted on a support bracket for ease and convenience during float maintenance.



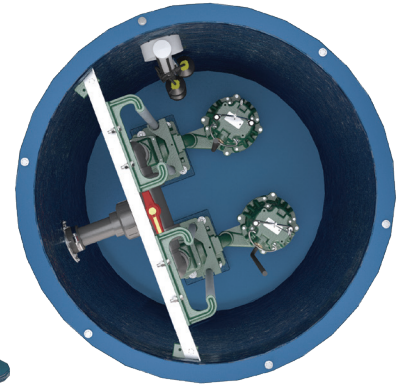
What Sets QLS SERIES™ Lift Stations With Z-Rail® Technology Apart?



Simplex System



Duplex System



QLS Series™ systems are prefabricated including all piping and rail system components.

Z-Rail® System: Both the disconnect portion and the upper guide rail supports are made of domestic epoxy powder coated ductile iron, providing superior strength. Dual guide rails add stability, ensuring that the pump will not spin on the rail during installation or removal.

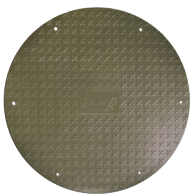
Basin: Zoeller Company stocks many different basin and cover options to fit a multitude of wastewater collection projects. Basin sizes from 24" x 48" to 48" x 120" meet most application needs. Customized packages available.

Pipe Seal Hub: A 4" pipe seal is provided as a convenient field-installed inlet hub.

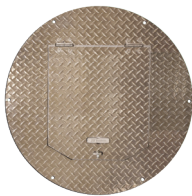
AFD: QLS Series™ basins come with an anti-floatation collar to resist buoyancy in high groundwater locations.

Flex-Boot Discharge: Connection: A flexible, stable discharge seal remains watertight despite external pressures due to pipe settling.

Schedule 80 PVC Piping: Schedule 80 PVC discharge piping provides greater support and dependability with its thicker walls and higher pressure rating.



Fiberglass



Aluminum Hatch



Steel Hatch

Basin Cover: Solid fiberglass, aluminum hatch, and steel hatch covers are stocked for QLS Series™ packages.

Three Way Ball Valve: The QLS Series™ systems utilize a 3-way ball valve in duplex configurations. The valve is positioned so that the service providers can easily isolate pumps without entering the basin.

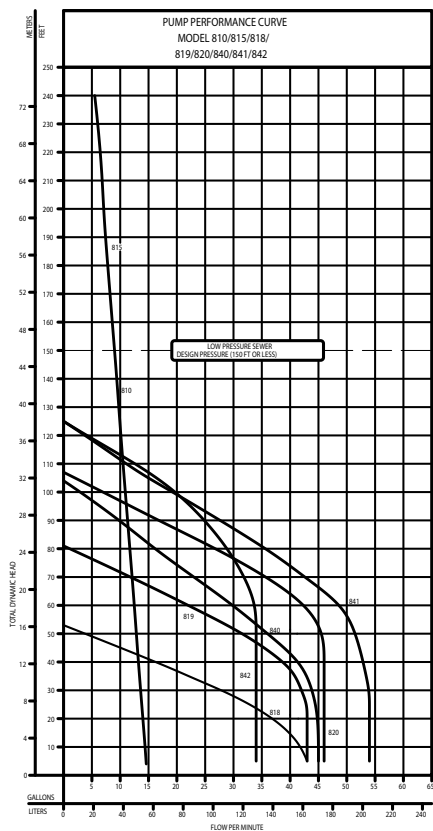


QLS Pump Selection Chart

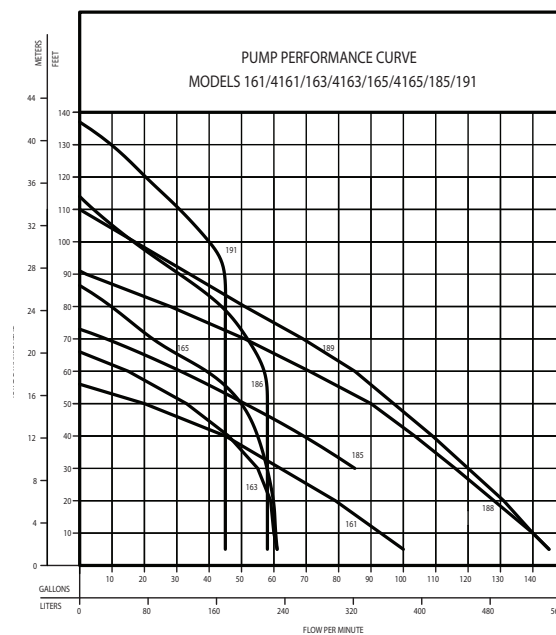
Table 2: Available Power Codes by Pump Model

	Grinder Pumps								Effluent Pumps w/ 3/4"solids passing*								Sewage Pumps w/ 2"solids passing						
	810	815	818	819	820	840	841	842	161	163	165	185	186	188	189	191*	282	284	292	293	294	295	
N 115V, 1PH			X						X	X							X	X	X				
E 230V, 1PH	X	X	X	X	X	X	X	X	X	X	X	X	X	X	X	X	X	X	X	X	X	X	X
I 200-208V, 1PH			X	X	X	X	X	X	X	X	X	X	X	X	X		X	X	X	X	X	X	X
J 200-208V, 3PH			X	X	X	X	X	X	X	X	X	X	X	X	X		X	X	X	X	X	X	X
F 230V, 3PH			X	X	X	X	X	X	X	X	X	X	X	X	X		X	X	X	X	X	X	X
G 460V, 3PH			X	X	X	X	X	X	X	X	X	X	X	X	X		X	X	X	X	X	X	X
Discharge Pipe Size	1-1/4"	1-1/4"	2"	2"	2"	2"	2"	2"	2"	2"	2"	2"	2"	2"	2"	2"	2"	2"	2"	2"	2"	2"	2"

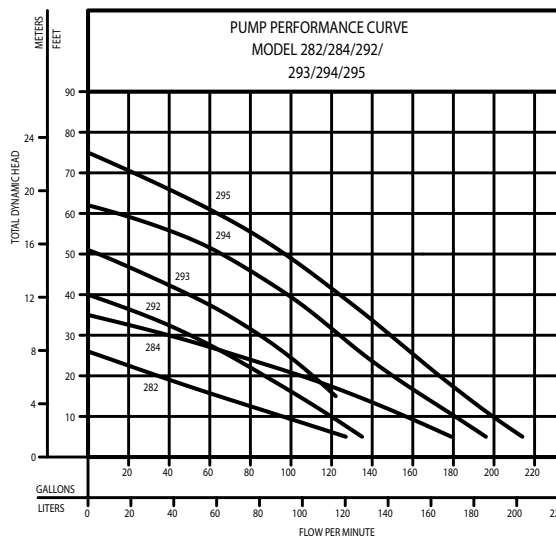
* Model 191 passes 5/8" solids



155707



010740



155708



MAIL TO: P.O. BOX 16347 • Louisville, KY 40256-0347
SHIP TO: 3649 Cane Run Road • Louisville, KY 40211-1961
(502) 778-2731 • 1 (800) 928-PUMP • FAX (502) 774-3624

zoellerpumps.com

Trusted. Tested. Tough.®